

Syntace

X-FIX

E\ Anleitung. 20190923

CONGRATULATIONS ON THE PURCHASE OF YOUR NEW SYNTACE PRODUCT. YOUR SYNTACE PRODUCT WAS CAREFULLY DESIGNED AND CONSTRUCTED. However, it is necessary that you follow all the instructions provided in this manual.

Installation & compatibility

Syntace X-FIX upgrades all X-12 equipped bikes by a simple exchange of the enclosed snap fit equipped conical shim. Suitable for retrofitting on all original Syntace X-12 through axle systems. Regardless of whether equipped with a conventional through axle QR** or keyless such as the Liteville, CUBE, Cannondale, Stevens, Lapierre, Canyon, Norco, Mountain Cycle and many more, as well as the licenced version from Specialized**.

- Remove the Syntace X-12 axle from your frame using a 5mm Allen key or the Syntace X-FIX.



- Use a little force to push the cone off the axle. Ensure the washer stays on the axle.



- Push the new X-FIX cone onto the axle.



- Now, use a little force, to push the X-FIX cone fully onto the axle until it dead stops. Then, place the enclosed O-Ring into the groove on the front.

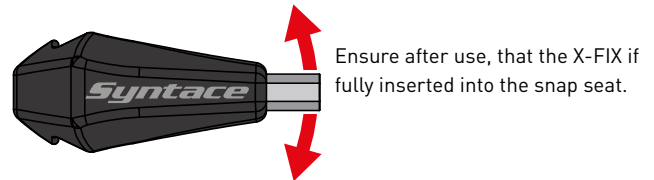


- The X-12 axle can now be put back into the frame. To fasten, you can already use the X-FIX. To finish, insert the long end of the X-FIX into the X-12 axle, until it snaps into place. Finished.

Care, maintenance and safety

To protect the X-FIX key against corrosion, every now and then lightly apply some WD40TM, BallistolTM, Silicon spray or similar. Also treat the o-ring in the cone lightly with silicon spray or silicon grease. Otherwise, it may be difficult to remove the X-FIX from after extended periods of non-use.

TIP: even a tight fitting X-FIX can easily be removed. You just need to wiggle a little at the short end while pulling it out.



WARRANTY

Instead of the legally required 2 year warranty, Syntace gives 10 years warranty from date of purchase on all material and manufacturing defects. Only condition: All components are to be installed and used as outlined in the owner's manual.

Within the warranty period faulty components will be assessed by Syntace Germany and accordingly either repaired or replaced. The exchange of a Liteville frame within the warranty period occurs free of charge within the first 5 years warranty, in the 5 -10th year a 50% discount on the respective current retail price is offered. For the Liteville 901 frame we give 3+7 years warranty, downhill use included.

If you would like to report a warranty case please send the component with a written explanation to:

Syntace GmbH
Stefan-Flötzl-Str. 6
83342 Tacherting / Germany
Tel. +49 (0)8634-66 666
Fax: +49 (0)8634-6365
Email: syntace@syntace.de

Further Information at:

www.syntace.de/support

Please note: The latest installation and operating instructions are always binding for your product at: www.syntace.de/support

